

产品分析证书 Certificate of Analysis

产品信息(Product Information)

产品编号 (CAT No.): N0526

中文名称: 吐根碱二盐酸盐

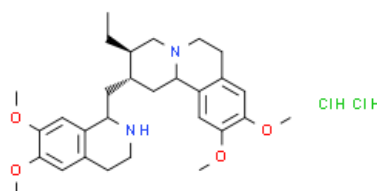
English Name: Emetine Dihydrochloride

CAS No.: 316-42-7

分子式 (M. F.): C₂₉H₄₂CL₂N₂O₄

分子量 (M. W.): 553.565

批号 (Batch No.): N0526-100mg-M230713012223



检测项目及结果 (Specifications&results)

检验项目(Test Item)	检验规格 (Specifications)	检验结果 (Results)
颜色 Color	白色至类白色(White to Off-white)	类白色(Off-white)
外观 Appearance	粉末或固体(Powder or Solid)	粉末(Powder)
纯度 Purity	98%	Conforms
质谱 Mass	Comply with the structure	Conforms
核磁 NMR	Comply with the structure	Conforms

检测信息 (Detection Information)

色谱柱(Column)	Thermo HyPURITY C18 , 4.6*150mm,3.0μm
流动相(Mobile phase)	A, Acetonitrile B, 50mmol/L Triethylamine in water (Phosphoric acid adjusted to pH 2-3);
检测波长(Detection mode)	283nm
柱温 (Column temperature)	30℃

贮存条件 (Storage) :2~8℃, protected from light, keep package airproofed. <-15℃ when not in use for a long time. (密封保存, 置于阴凉干燥处, 长期不使用最好放置于-15℃以下环境中)

温馨提示 (Reminder) :The sample solutions should be prepared immediately before use.(请现配现用)



QA: Joy Li

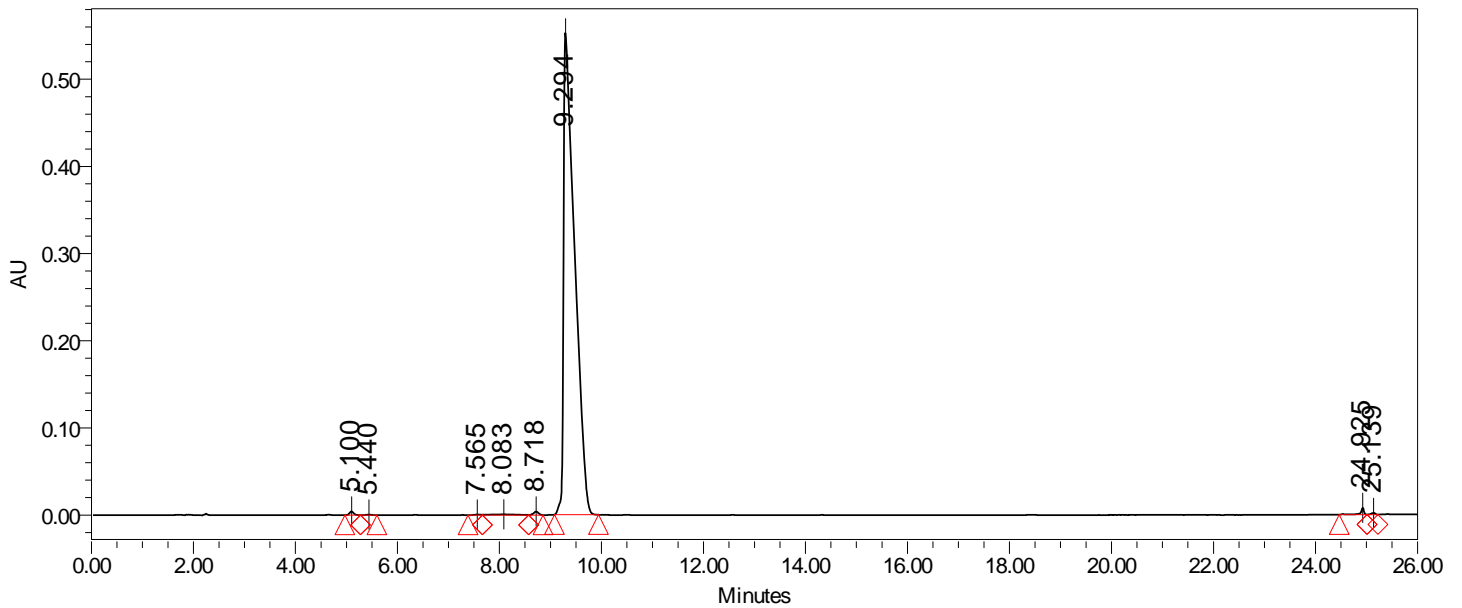
产品售后 (After-sale service):In case of quality issue, please contact us within 15 days after receipt of the product. (若对于我们的产品质量有任何疑问, 请于收到货后 15 天内联系我们)

(We appreciate you much when publishing your paper and marking the chemical purchase from Naturewill Biotechnology Co., Ltd.(Chengdu,China) 当发表论文时, 请您标注化合物购买于四川恒诚致远生物科技有限公司, 非常感谢您的支持。)

SAMPLE INFORMATION

Sample Name:	Emetine Dihydrochloride	Acquired By:	01
Sample Type:	Unknown	Sample Set Name	
Vial:	71	Acq. Method Set:	Emetine Dihydrochloride
Injection #:	1	Processing Method	samples
Injection Volume:	15.00 ul	Channel Name:	PDA Ch1 283nm@4.8nm
Run Time:	30.0 Minutes	Proc. Chnl. Descr.:	PDA Ch1 283nm@4.8nm
Date Acquired:	6/21/2022 4:17:21 PM CST		
Date Processed:	6/21/2022 4:48:39 PM CST		

Auto-Scaled Chromatogram



Peak Results

	Name	RT	Area	% Area	Height (μV)	USP Plate Count	USP Resolution
1		5.100	23294	0.28	4127	19408.79	
2		5.440	3693	0.04	592	20338.78	2.17
3		7.565	4960	0.06	628	16290.44	
4		8.083	29272	0.35	792	944.96	
5		8.718	26810	0.32	3961	38313.57	0.88
6		9.294	8275835	98.37	552691	6823.17	1.81
7		24.925	37975	0.45	7898	1283121.52	57.41
8		25.139	11057	0.13	2065	535027.47	1.79