

产品分析证书 Certificate of Analysis

产品信息(Product Information)

产品编号 (CAT No.): N0223

中文名称: 宝藜苷I

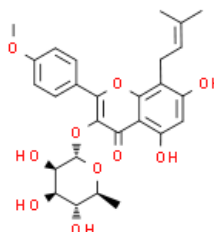
English Name: Baohuoside I

CAS No.: 113558-15-9

分子式 (M. F.): C₂₇H₃₀O₁₀

分子量 (M. W.): 514.527

批号 (Batch No.): N0223-500mg-M240223125612



检测项目及结果 (Specifications&results)

检验项目 (Test Item)	检验规格 (Specifications)	检验结果 (Results)
颜色 Color	淡黄色至黄色(light yellow to Yellow)	黄色(yellow)
外观 Appearance	粉末或固体(Powder or Solid)	粉末(Powder)
纯度 Purity	98%	Conforms
质谱 Mass	Comply with the structure	Conforms
核磁 NMR	Comply with the structure	Conforms

检测信息 (Detection Information)

色谱柱(Column)	Agilent 5TC-C18, 4.6*250mm, 5.0um
流动相(Mobile phase)	0.1%磷酸、乙腈
检测波长(Detection mode)	270nm
柱温 (Column temperature)	30℃

贮存条件 (Storage): 2~8℃, protected from light, keep package airproofed. <-15℃ when not in use for a long time. (密封保存, 置于阴凉干燥处, 长期不使用最好放置于-15℃以下环境中)

温馨提示 (Reminder): The sample solutions should be prepared immediately before use.(请现配现用)



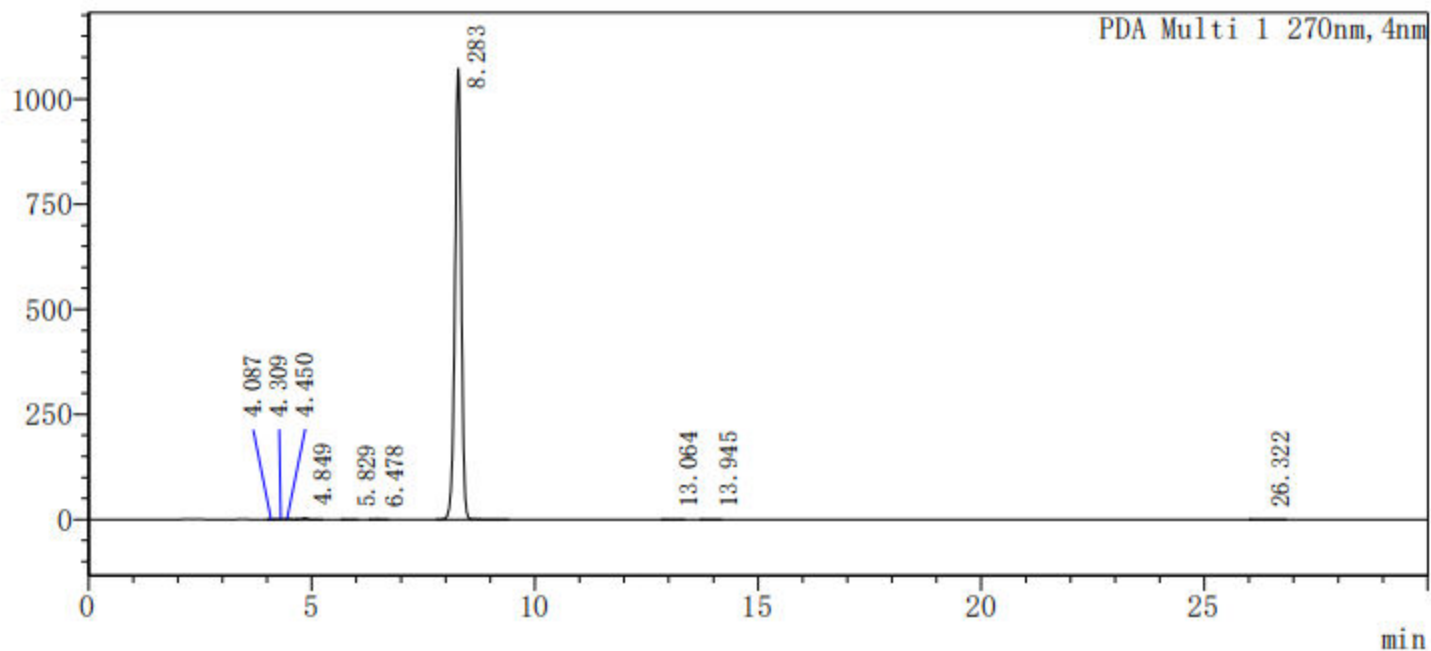
QA: Chao Zhang

产品售后 (After-sale service): In case of quality issue, please contact us within 15 days after receipt of the product. (若对于我们的产品质量有任何疑问, 请于收到货后 15 天内联系我们)

(We appreciate you much when publishing your paper and marking the chemical purchase from Naturewill Biotechnology Co., Ltd.(Chengdu,China) 当发表论文时, 请您标注化合物购买于四川恒诚致远生物科技有限公司, 非常感谢您的支持。)

<色谱图>

mAU



<峰表>

PDA Ch1 270nm

峰号	保留时间	面积	面积%	高度	理论塔板数 (USP)	拖尾因子	分离度 (USP)
1	4.087	784	0.007	140	6732	--	--
2	4.309	3933	0.037	458	2128	--	0.773
3	4.450	12075	0.115	1496	5066	--	0.451
4	4.849	24968	0.237	2991	7661	0.819	1.692
5	5.829	1122	0.011	146	11151	0.971	4.434
6	6.478	2588	0.025	322	13165	0.998	2.906
7	8.283	10474154	99.544	1071629	15307	0.956	7.312
8	13.064	503	0.005	38	19118	1.043	14.808
9	13.945	507	0.005	39	23469	0.871	2.374
10	26.322	1470	0.014	62	28381	1.127	25.027
总计		10522104	100.000	1077322			