

## 产品分析证书 Certificate of Analysis

### 产品信息(Product Information)

产品编号 (CAT No.): N1549

中文名称: 高良姜素

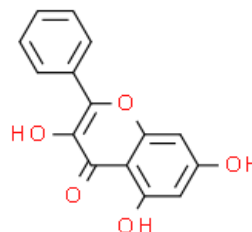
English Name: Galangin

CAS No.: 548-83-4

分子式 (M. F.): C<sub>15</sub>H<sub>10</sub>O<sub>5</sub>

分子量 (M. W.): 270.24

批号 (Batch No.): N2515495001



### 检测项目及结果 (Specifications&results)

检验项目 (Test Item)	检验规格 (Specifications)	检验结果 (Results)
颜色 Color	淡黄色至黄色(light yellow to Yellow)	黄色(yellow)
外观 Appearance	粉末或固体(Powder or Solid)	粉末(Powder)
纯度 Purity	98%	Conforms
质谱 Mass	Comply with the structure	Conforms
核磁 NMR	Comply with the structure	Conforms

### 检测信息 (Detection Information)

色谱柱(Column)	4.6mm *250mm 5um
流动相(Mobile phase)	甲醇:0.1%磷酸=61:39Methanol : 0.1% Phosphoric acid in water =61:39
检测波长(Detection mode)	266nm
柱温 (Column temperature)	35℃

贮存条件 (Storage): 2~8℃, protected from light, keep package airproofed. <-15℃ when not in use for a long time. (密封保存, 置于阴凉干燥处, 长期不使用最好放置于-15℃以下环境中)

温馨提示 (Reminder): The sample solutions should be prepared immediately before use.(请现配现用)

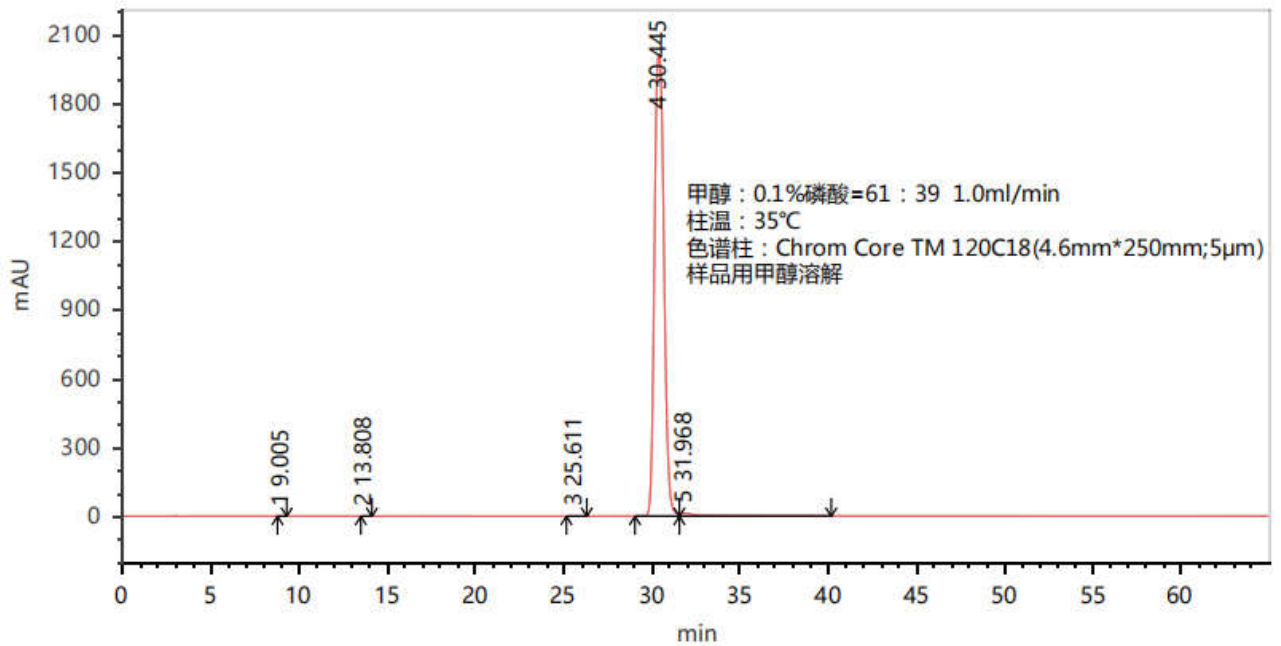


QA: Joy Li

产品售后 (After-sale service): In case of quality issue, please contact us within 15 days after receipt of the product. (若对于我们的产品质量有任何疑问, 请于收到货后 15 天内联系我们)

(We appreciate you much when publishing your paper and marking the chemical purchase from Naturewill Biotechnology Co., Ltd.(Chengdu,China) 当发表论文时, 请您标注化合物购买于四川恒诚致远生物科技有限公司, 非常感谢您的支持。)

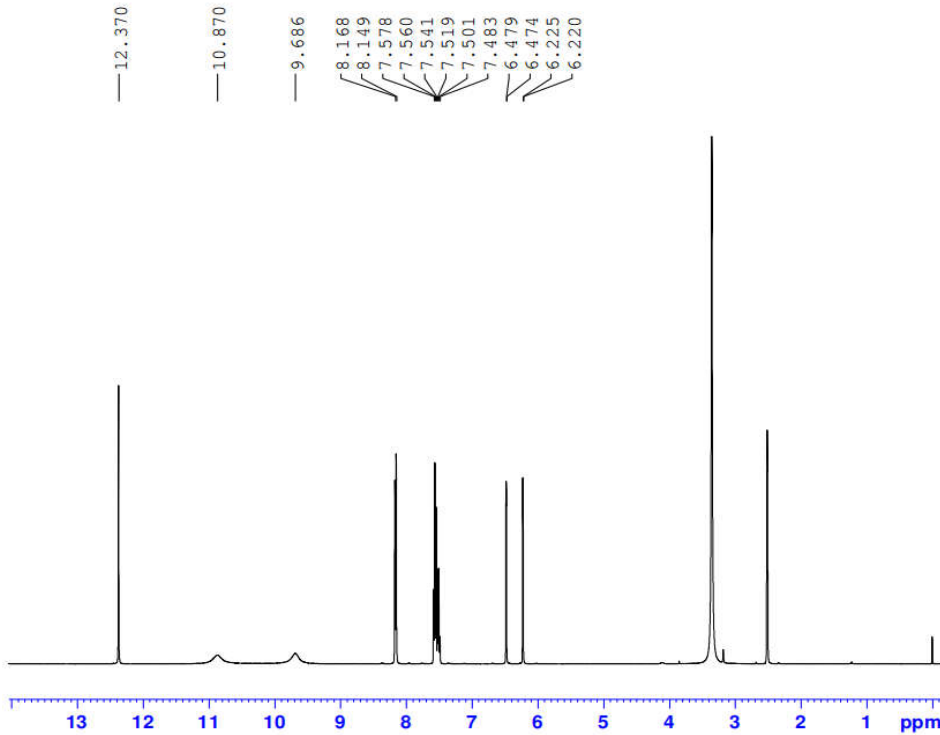
### HPLC



104032-240503 高良姜素\_通道1波长266nm

峰结果表					
序号	保留时间	峰面积	峰面积%	峰高	理论塔板数
1	9.005	1.392	0.002	0.096	11415
2	13.808	1.802	0.002	0.102	12706
3	25.611	12.167	0.016	0.338	15984
4	30.445	75312.507	98.909	2010.851	14704
5	31.968	815.667	1.071	11.697	10484
统计	110.837	76143.535	100.000	2023.084	

## NMR

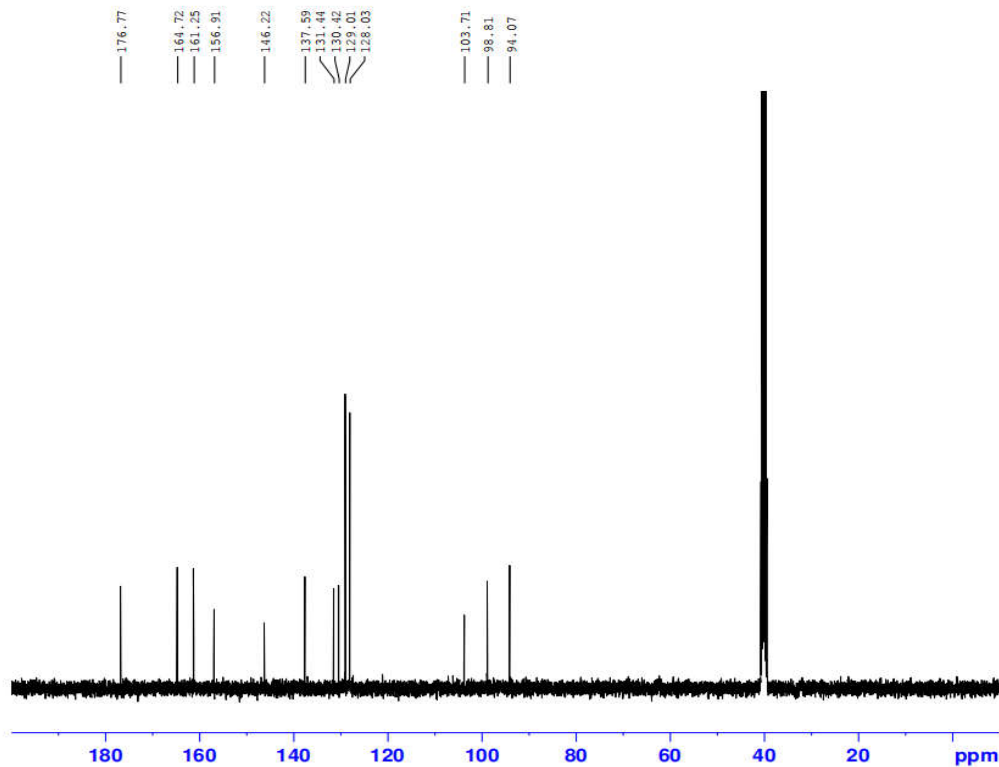


```
Current Data Parameters
NAME      104032-240503
EXPNO    124
PROCNO   1

F2 - Acquisition Parameters
Date_    20240531
Time     21.06
INSTRUM  spect
PROBHD   5 mm PABBO BB-
PULPROG  zg30
TD       65536
SOLVENT  DMSO
NS       16
DS       2
SWH      8012.820 Hz
FIDRES   0.122266 Hz
AQ       4.089465 sec
RG       203
DW       62.400 usec
DE       6.50 usec
TE       297.8 K
D1       1.00000000 sec
TD0      1
```

```
===== CHANNEL f1 =====
SFO1    400.1924713 MHz
NUC1    1H
P1      11.90 usec
PLW1    18.54999924 W
```

```
F2 - Processing parameters
SI      65536
SF      400.1900000 MHz
WDW     EM
SSB     0
LB      0.30 Hz
GB      0
PC      1.00
```



```
Current Data Parameters
NAME      104032-240503
EXPNO    125
PROCNO   1
```

```
F2 - Acquisition Parameters
Date_    20240531
Time     21.15
INSTRUM  spect
PROBHD   5 mm PABBO BB-
PULPROG  zgpg30
TD       65536
SOLVENT  DMSO
NS       170
DS       4
SWH      24038.461 Hz
FIDRES   0.366798 Hz
AQ       1.3631488 sec
RG       203
DW       20.800 usec
DE       6.50 usec
TE       299.2 K
D1       2.00000000 sec
D11      0.03000000 sec
TD0      1
```

```
===== CHANNEL f1 =====
SFO1    100.6379178 MHz
NUC1    13C
P1      15.00 usec
PLW1    57.70000076 W
```

```
===== CHANNEL f2 =====
SFO2    400.1916008 MHz
NUC2    1H
CPDPRG[2] waltz16
PCPD2   90.00 usec
PLW2    18.54999924 W
PLW12   0.32429999 W
PLW13   0.26269001 W
```

```
F2 - Processing parameters
SI      32768
SF      100.6278555 MHz
WDW     EM
SSB     0
LB      1.00 Hz
GB      0
PC      1.40
```